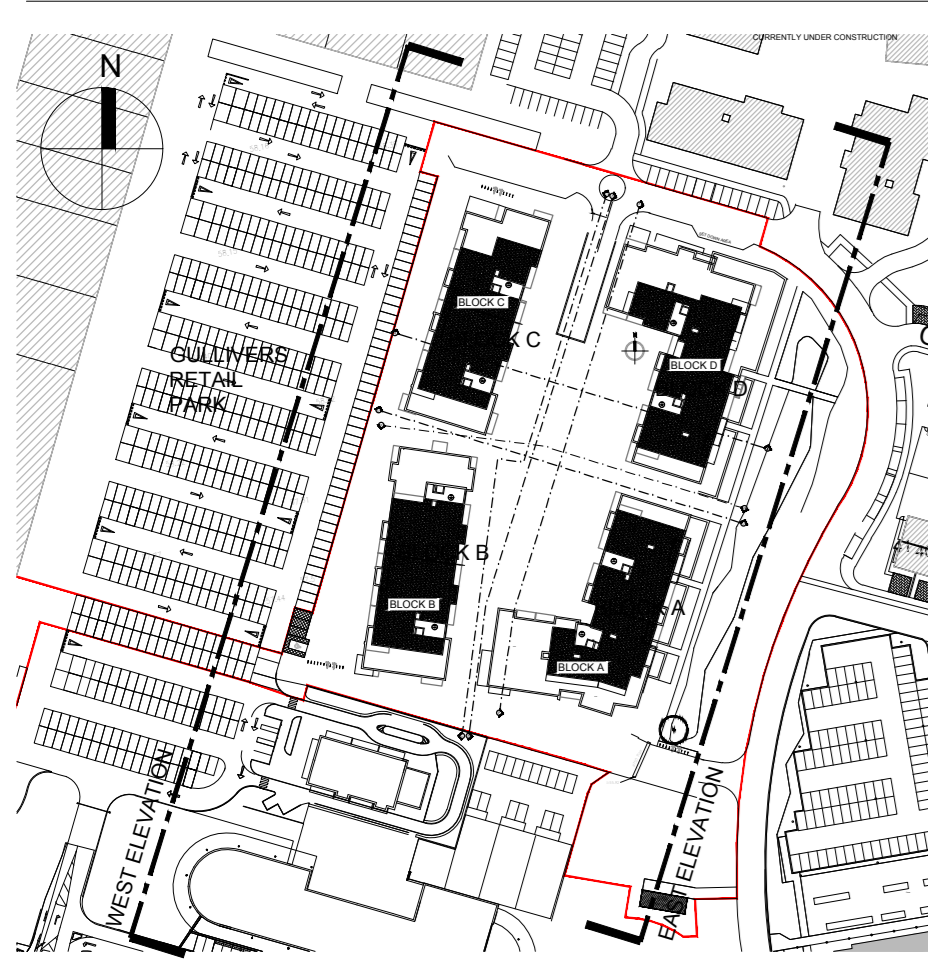


KEY PLAN (NTS)



THIS DRAWING TO BE READ IN CONJUNCTION WITH ARCHITECT'S DRAWINGS, CONSULTANT ENGINEER'S DRAWINGS AND SPECIFICATIONS, AND LANDSCAPE ARCHITECT'S DRAWINGS. REFER TO ARCHITECT'S SITE PLAN FOR SPECIFIC NORTH ORIENTATION.

GENERAL NOTES

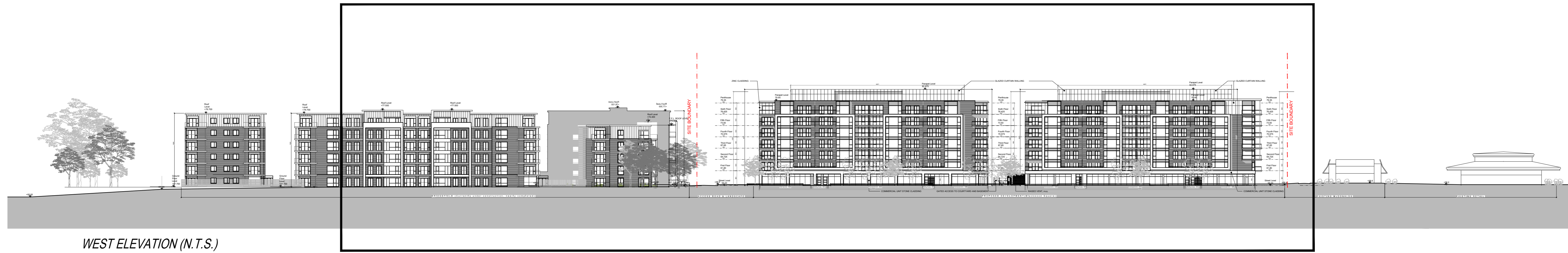
THIS DRAWING TO BE READ IN CONJUNCTION WITH ARCHITECT'S DRAWINGS, CONSULTANT ENGINEER'S DRAWINGS AND SPECIFICATIONS & LANDSCAPE ARCHITECT'S DRAWINGS. REFER TO ARCHITECT'S SITE PLAN P.002 AND P.003 FOR NORTH ORIENTATION.

REFER TO CONSULTING ENGINEERS DRAWINGS FOR BLOCK LEVELS.

NOTES ON FINISHES:

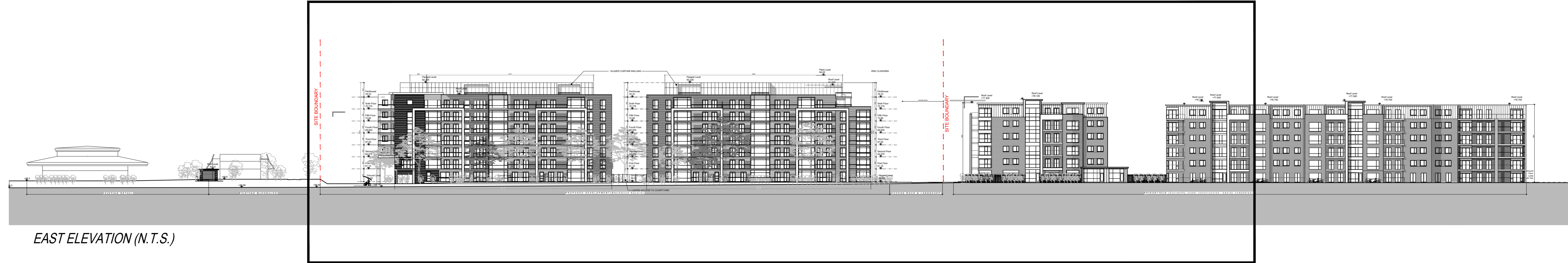
- ROOF: TO BE FINISHED IN SINGLE PLY MEMBRANE OR SIMILAR APPROVED.
- WALLS: SELECTED CLAY BRICKWORK WHERE INDICATED FEATURE AREAS IN STONE / SELF-COLOURED RENDER / COLOUR COATED METAL. TOP SET BACK STOREY FINISHED WITH GLAZED CURTAIN WALLING (ALUMINUM COLOUR COATED FRAMES) OR ZINC CLADDING AS SHOWN ON ELEVATIONS.
- JOINERY: WINDOWS AND DOORS, FRAMES AND LEAVES, WILL BE COLOURED UPVC (WITH LIMITED AREAS OF COLOUR COATED ALUMINUM CURTAIN WALLING). OBTAIN GLAZING TO BATHROOM / TOILET WINDOWS AND WHERE INDICATED ON G.A.
- RAINWATER GOODS: VISIBLE GUTTERS, DOWNPIPES AND FINISHES TO BE UPVC OR ALUMINUM POWDER COATED TO SELECTED COLOUR.
- BALCONIES: GLAZED BALUSTRADES AND POWDER COATED HANDRAILS / UPRIGHTS. STEEL OR CONCRETE BALCONY STRUCTURE / FLOORS.

ENLARGED PORTION TO 1:200



WEST ELEVATION (N.T.S.)

ENLARGED PORTION TO 1:200



EAST ELEVATION (N.T.S.)



WEST ELEVATION @ 1:200



EAST ELEVATION @ 1:200

NOTES:

DO NOT SCALE FROM DRAWINGS. WORK TO FIGURED DIMENSIONS ONLY. ARCHITECT TO BE NOTIFIED OF ALL DISCREPANCIES.

REVISIONS		No.
DATE	DESCRIPTION	

PROJECT TITLE: **Blackwood Square, SHD**
 DRAWING TITLE: **Apartment Blocks West & East Context Elevations**
 DATE: **Oct'19**
 SCALE: **1:200@A4**
 DRAWING NO: **14030.7 PL20**